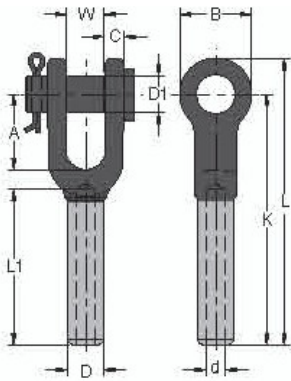


PWB Anchor Wire Rope Fittings

Forged Open Swage Socket, with Round Pin



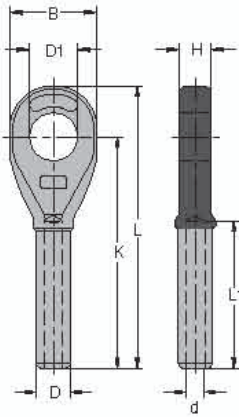
- Forged from special bar quality carbon steel with superior hardness controlled by spheroidize annealing.
- When correctly assembled Swage socket terminations have an efficiency rating of 100% based on the catalogue strength of wire rope.
- Recommended for use with 6 x 19, 6 x 37 and IWRC wire rope and are approved for use with galvanized bridge rope.
- **NOT Recommended for use on fibre core of lang lay rope**
- All slings swaged with sockets shall be proof loaded in accordance with AS 1666.1/2009

Item No. (Self Colour)	Part No. (Self Colour)	Item No. (Galvanised)	Part No. (Galvanised)	Rope Size (mm)	Rope Size (inch)	Before Swage Dimensions (inch)										Max After Swage Dim. (inch)	N.W (Lbs.)
						L	D	B	D1	d	L1	W	K	C	A		
8-731-10	46814	8-731-G10	46798	9-10	3/8	6.26	0.77	1.65	0.81	0.41	3.15	0.79	5.31	0.47	1.77	0.71	1.3
8-731-11	46818	8-731-G11	46799	11-12	7/16	7.83	0.98	2.00	1.00	0.48	4.33	1.00	6.85	0.55	1.96	0.91	2.6
8-731-13	46819	8-731-G13	46800	13	1/2	7.83	0.98	2.00	1.00	0.55	4.33	1.00	6.85	0.55	1.96	0.91	2.1
8-731-14	46820	8-731-G14	46801	14-15	9/16	9.45	1.25	2.36	1.19	0.62	5.31	1.22	8.27	0.68	2.25	1.16	4.7
8-731-16	46821	8-731-G16	46802	16	5/8	9.45	1.25	2.36	1.19	0.67	5.31	1.22	8.27	0.68	2.25	1.16	4.6
8-731-19	46822	8-731-G19	46803	18-20	3/4	11.61	1.55	2.75	1.38	0.82	6.34	1.50	10.07	0.79	2.75	1.42	8.4
8-731-22	46823	8-731-G22	46804	22-23	7/8	13.39	1.70	3.15	1.63	0.94	7.44	1.77	11.81	0.94	3.23	1.55	11.9
8-731-26	46824	8-731-G26	46805	24-25	1	15.55	1.98	3.94	2.00	1.06	8.50	2.00	13.58	1.02	3.86	1.80	19.4
8-731-28	46826	8-731-G28	46806	28	1-1/8	17.40	2.25	4.06	2.20	1.19	9.37	2.25	15.08	1.19	4.26	2.05	27.8
8-731-32	46827	8-731-G32	46807	32	1-1/4	19.06	2.53	4.45	2.25	1.33	10.59	2.48	16.50	1.34	4.72	2.30	37.9

Item No. (Self Colour)	Part No. (Self Colour)	Item No. (Galvanised)	Part No. (Galvanised)	Rope Size (mm)	Rope Size (inch)	Before Swage Dimensions (mm)										Max After Swage Dim. (mm)	N.W (kg)
						L	D	B	D1	d	L1	W	K	C	A		
8-731-10	46814	8-731-G10	46798	9-10	3/8	159	20	42	21	10.0	80	20	135	12	45	18	0.6
8-731-11	46818	8-731-G11	46799	11-12	7/16	199	25	50	25	12.0	110	25	174	14	50	23	1.2
8-731-13	46819	8-731-G13	46800	13	1/2	199	25	50	25	14.0	110	25	174	14	50	23	0.9
8-731-14	46820	8-731-G14	46801	14-15	9/16	240	32	60	30	16.0	135	31	210	17	70	30	2.1
8-731-16	46821	8-731-G16	46802	16	5/8	240	32	60	30	17.0	135	31	210	17	57	30	2.1
8-731-19	46822	8-731-G19	46803	18-20	3/4	295	39	70	35	21.0	161	38	256	20	70	36	3.8
8-731-22	46823	8-731-G22	46804	22-23	7/8	340	43	80	41	24.0	189	45	300	24	82	40	5.4
8-731-26	46824	8-731-G26	46805	24-25	1	395	50	100	51	27.0	216	50	345	26	98	46	8.8
8-731-28	46826	8-731-G28	46806	28	1-1/8	442	57	103	57	30.0	238	57	383	30	108	52	12.6
8-731-32	46827	8-731-G32	46807	32	1-1/4	484	64	113	64	34.0	269	63	419	34	120	59	17.2

Every care has been taken to ensure the accuracy of information contained in this document which supersedes earlier publications, however PWB Anchor Ltd shall not be liable for any loss or damage howsoever caused arising from the application of such information. PWB Anchor Ltd maintains a policy of progress development of products and reserves the right to alter without notice, the specification shown in this document.

Forged Closed Swage Wire Rope Socket



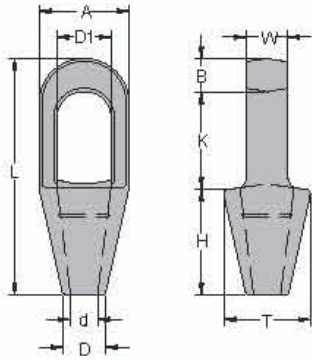
- Forged from special bar quality carbon steel with superior hardness controlled by spheroidize annealing.
- When correctly assembled Swage socket terminations have an efficiency rating of 100% based on the catalogue strength of wire rope.
- Recommended for use with 6 x 19, 6 x 37 and IWRC wire rope and are approved for use with galvanized bridge rope.
- **NOT Recommended for use on fiber core of lang lay rope**
- All slings swaged with sockets shall be proof loaded in accordance with AS 1666.1/2009

Item No. (Self Colour)	Part No. (Self Colour)	Rope Size (inch)	Before Swage Dimensions (inch)								Max After Swage Dim. (inch)	N.W (lbs.)
			L	D	B	D1	d	L1	H	K		
8-732-10	46834	3/8	5.50	0.77	1.63	0.89	0.41	3.15	0.67	4.50	0.71	0.7
8-732-11	46835	7/16	6.93	0.98	2.00	1.06	0.48	4.25	0.89	5.75	0.91	1.5
8-732-13	46836	1/2	6.93	0.98	2.00	1.06	0.55	4.25	0.89	5.75	0.91	1.4
8-732-14	46837	9/16	8.70	1.25	2.40	1.26	0.62	5.31	1.14	7.28	1.16	3.1
8-732-16	46838	5/8	8.70	1.25	2.40	1.26	0.67	5.31	1.14	7.28	1.16	2.9
8-732-19	46839	3/4	10.20	1.55	2.87	1.44	0.82	6.38	1.31	8.54	1.42	4.8
8-732-22	46840	7/8	11.97	1.70	3.11	1.70	0.94	7.44	1.50	10.16	1.55	6.8
8-732-26	46841	1	13.46	1.98	3.62	2.05	1.06	8.50	1.77	11.54	1.80	10.6
8-732-28	46842	1-1/8	15.04	2.25	4.02	2.32	1.19	9.57	2.00	12.72	2.05	14.8
8-732-32	46843	1-1/4	16.97	2.53	4.50	2.56	1.33	10.63	2.25	14.33	2.30	22.3

Item No. (Self Colour)	Part No. (Self Colour)	Rope Size (mm)	Before Swage Dimensions (mm)								Max After Swage Dim. (mm)	N.W (kg)
			L	D	B	D1	d	L1	H	K		
8-732-10	46834	9-10	140	20	41	22	11.0	80	17	114	18	0.3
8-732-11	46835	11-12	176	25	51	27	12.0	108	22	146	23	0.7
8-732-13	46836	13	176	25	51	27	14.0	108	22	146	23	0.6
8-732-14	46837	14-15	221	32	61	32	16.0	135	29	185	30	1.4
8-732-16	46838	16	221	32	61	32	17.0	135	29	185	30	1.3
8-732-19	46839	18-20	259	39	73	36	21.0	162	33	217	36	2.2
8-732-22	46840	22-23	304	43	79	43	24.0	189	38	258	39	3.1
8-732-26	46841	24-25	342	50	92	52	27.0	216	45	293	46	4.8
8-732-28	46842	28	382	57	102	59	30.0	243	51	323	52	6.7
8-732-32	46843	32	431	64	114	65	34.0	270	57	364	58	10.1

Every care has been taken to ensure the accuracy of information contained in this document which supersedes earlier publications, however PWB Anchor Ltd shall not be liable for any loss or damage howsoever caused arising from the application of such information. PWB Anchor Ltd maintains a policy of progress development of products and reserves the right to alter without notice, the specification shown in this document.

Forged Closed Spelter Wire Rope Socket



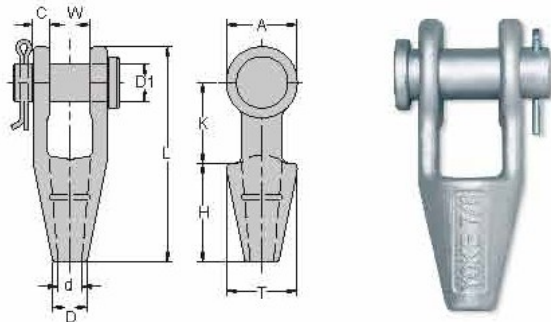
- Forged from special bar quality carbon steel with superior hardness controlled by spheroidize annealing.
- When correctly assembled Swage socket terminations have an efficiency rating of 100% based on the catalogue strength of wire rope.
- Socket size 1/4" thru 3/4" use one groove, 7/8" thru 1-1/2" use 2 grooves
- In accordance with AS 1666.1/2009 all assembly slings with poured Spelter Sockets, shall be proof loaded

Item No. (Galvanised)	Part No. (Galvanised)	Rope Dia. (inch)	Structural Strand Dia. (inch)	Dimensions (inch)											N.W (Lbs.)
				L	B	A	D1	d	D	T	H	W	K		
8-735-G13	46772	7/16 ~ 1/2	-	5.43	0.71	2.00	1.19	0.55	0.98	1.96	2.52	0.87	2.25	1.5	
8-735-G16	46773	9/16 ~ 5/8	1/2	6.31	0.83	2.63	1.41	0.71	1.12	2.50	3.00	0.98	2.52	2.6	
8-735-G19	46774	3/4	9/16 ~ 5/8	7.58	1.06	3.00	1.61	0.81	1.26	2.75	3.50	1.26	3.00	4.3	
8-735-G22	46775	7/8	1 1/16 ~ 3/4	8.75	1.26	3.63	1.89	0.94	1.50	3.46	3.98	1.50	3.50	7.9	
8-735-G26	46777	1	13/16 ~ 7/8	9.88	1.38	4.13	2.28	1.14	1.77	3.78	4.50	1.77	4.02	10.5	
8-735-G28	46780	1 1/8	15/16 ~ 1	10.98	1.50	4.50	2.56	1.26	2.00	4.12	5.00	2.00	4.50	15.2	
8-735-G36	46781	1 1/4 ~ 1 3/8	1 1/16 ~ 1 1/8	12.31	1.63	5.31	2.80	1.50	2.25	4.75	5.50	2.25	5.00	22.7	
8-735-G38	46782	1 1/2	1 3/16 ~ 1 1/4	13.94	1.93	5.31	3.19	1.63	2.75	5.25	6.00	2.52	6.00	30.9	

Item No. (Self Colour)	Part No. (Self Colour)	Rope Dia. (mm)	Structural Strand Dia. (mm)	Dimensions (mm)											N.W (Kg)
				L	B	A	D1	d	D	T	H	W	K		
8-735-G13	46772	11-13	-	138	18	51	30	14	25	50	64	22	57	0.7	
8-735-G16	46773	14-16	13	160	21	67	36	18	28	63	76	25	64	1.2	
8-735-G19	46774	18-20	14-16	192	27	76	41	21	32	70	89	32	76	2.0	
8-735-G22	46775	22-23	18-20	222	32	92	48	24	38	88	101	38	89	3.6	
8-735-G26	46777	24-26	22-23	251	35	104	58	29	45	96	114	45	102	4.8	
8-735-G28	46780	28-30	24-25	279	38	114	65	32	51	105	127	50	114	6.9	
8-735-G36	46781	32-35	26-28	308	41	135	71	38	57	121	140	57	127	10.3	
8-735-G38	46782	36-39	30-32	354	49	135	81	41	70	133	152	64	152	14.0	

Every care has been taken to ensure the accuracy of information contained in this document which supersedes earlier publications, however PWB Anchor Ltd shall not be liable for any loss or damage howsoever caused arising from the application of such information. PWB Anchor Ltd maintains a policy of progress development of products and reserves the right to alter without notice, the specification shown in this document.

Forged Open Spelter Wire Rope Socket, with round pin



- Forged from special bar quality carbon steel with superior hardness controlled by spheroidize annealing.
- When correctly assembled Swage socket terminations have an efficiency rating of 100% based on the catalogue strength of wire rope.
- Socket size 1/4" thru 3/4" use one groove, 7/8" thru 1-1/2" use 2 grooves
- In accordance with AS 1666.1/2009 all assembly slings with poured Spelter Sockets, shall be proof loaded

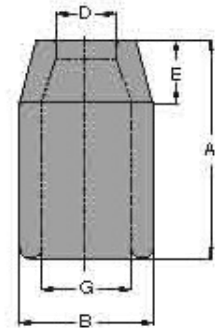
Item No. (Galvanised)	Part No. (Galvanised)	Rope Dia. (inch)	Structural Strand Dia. (inch)	Dimensions (inch)										N.W (Lbs.)
				L	W	D1	d	D	T	H	K	A	C	
8-734-G13	46786	7/16 ~ 1/2	-	5.62	1.00	0.98	0.56	0.98	1.96	2.48	2.13	1.91	0.50	2.3
8-734-G16	46787	9/16 ~ 5/8	1/2	6.77	1.26	1.19	0.70	1.14	2.25	3.00	2.52	2.28	0.55	3.7
8-734-G19	46788	3/4	9/16 ~ 5/8	7.96	1.50	1.38	0.81	1.26	2.64	3.62	3.00	2.64	0.62	5.8
8-734-G22	46789	7/8	11/16~3/4	9.25	1.77	1.63	0.94	1.50	3.35	4.02	3.50	3.17	0.80	10.4
8-734-G26	46791	1	13/16~7/8	10.55	2.05	2.00	1.14	1.75	3.75	4.48	4.02	3.78	0.91	16.3
8-734-G28	46793	1 1/8	15/16~1	11.81	2.25	2.25	1.26	2.00	4.12	5.00	4.62	4.12	1.00	22.0
8-734-G36	46794	1 1/4~1 3/8	1 1/16~1 1/8	13.20	2.52	2.50	1.50	2.25	4.72	5.51	5.00	4.75	1.14	32.8
8-734-G38	46795	1 1/2	1 3/16~1 1/4	15.12	3.00	2.75	1.63	2.75	5.25	6.00	6.00	5.38	1.19	45.9

Item No. (Galvanised)	Part No. (Galvanised)	Rope Dia. (mm)	Structural Strand Dia. (mm)	Dimensions (mm)										N.W (Kg.)
				L	W	D1	d	D	T	H	K	A	C	
8-734-G13	46786	11-13	-	142	25	25	15	25	50	63	54	48	13	1.1
8-734-G16	46787	14-16	13	172	32	30	18	29	57	76	64	58	14	1.7
8-734-G19	46788	18-20	14-16	202	38	35	22	32	67	92	76	67	16	2.6
8-734-G22	46789	22-23	18-20	235	45	41	24	38	85	102	89	80	20	4.7
8-734-G26	46791	24-26	22-23	268	52	51	29	44	95	114	102	96	23	7.4
8-734-G28	46793	28-30	24-25	300	57	56	32	51	105	127	117	105	25	10.0
8-734-G36	46794	32-35	26-28	335	64	62	38	57	120	140	127	121	29	14.9
8-734-G38	46795	36-39	30-32	384	76	70	41	70	133	152	152	137	30	20.8

Every care has been taken to ensure the accuracy of information contained in this document which supersedes earlier publications, however PWB Anchor Ltd shall not be liable for any loss or damage howsoever caused arising from the application of such information. PWB Anchor Ltd maintains a policy of progress development of products and reserves the right to alter without notice, the specification shown in this document.

Steel Swage Sleeve (Zinc Plated)

Item No.	Part No.	For Rope Size (inch)	Before Swage Dimensions (inch)					Max. After Swage Dim. (inch)	N.W (Lbs.)
			A	B	D	E	G		
902-06	46848	1/4	1	0.66	0.31	0.28	0.47	0.57	0.05
902-08	46849	5/16	1.5	0.91	0.38	0.44	0.62	0.75	0.14
902-10	46850	3/8	1.5	0.91	0.47	0.39	0.66	0.75	0.14
902-11	46851	7/16	2	1.22	0.53	0.65	0.85	1.01	0.3
902-13	46852	1/2	2	1.22	0.63	0.56	0.91	1.01	0.4
902-16	46854	5/8	2.75	1.47	0.75	0.63	1.09	1.24	0.6
902-19	46855	3/4	3.19	1.72	0.91	0.84	1.28	1.46	0.9
902-22	46856	7/8	3.56	2.03	1.03	1.00	1.53	1.68	1.3
902-26	46857	1	4	2.28	1.16	1.13	1.72	1.93	2.0
902-28	46858	1-1/8	4.81	2.5	1.28	1.25	1.94	2.13	2.6
902-32	46859	1-1/4	5.19	2.78	1.44	1.41	2.16	2.32	3.6
902-36	46860	1-3/8	5.81	3	1.56	1.56	2.38	2.52	4.2
902-38	46861	1-1/2	6.25	3.25	1.69	1.69	2.63	2.71	5.0
902-45	46862	1-3/4	7.25	3.84	1.94	1.97	3.13	3.10	8.0
902-50	46863	2	8.5	4.38	2.25	2.25	3.63	3.56	11.3
902-58	46864	2-1/4	9.56	5.03	2.50	2.53	4.03	4.12	19.4
902-64	46865	2-1/2	10.50	5.50	2.75	2.81	4.50	4.50	23.5
902-70	46866	2-3/4	11.50	5.75	3.00	3.09	4.75	4.70	28.0
902-75	46867	3	12.0	6.0	3.25	3.38	5.00	4.96	29.4
902-89	46868	3-1/2	14.0	7.00	3.88	3.94	5.84	5.77	46.4
902-95	46869	3-3/4	15.00	7.50	4.06	4.25	6.31	6.23	55.0
902-100	46870	4	16.00	8.13	4.38	4.50	6.81	6.69	68.0



Every care has been taken to ensure the accuracy of information contained in this document which supersedes earlier publications, however PWB Anchor Ltd shall not be liable for any loss or damage howsoever caused arising from the application of such information. PWB Anchor Ltd maintains a policy of progress development of products and reserves the right to alter without notice, the specification shown in this document.